

Run For Cover

Marcus Miller

As Recorded On David Sanborn's
Straight To The Heart

Transcribed By Cliff Engel

♩ = 108

A

1 14

p *mf*

B

17

H

20

PO

23

H H H H H

26

PO

29

3 3 3

32

Sva

35

HH HH HH HH

38

HPOPO PPOPOS *f*

C

41

SP P S H S S P S H S \oplus PS P S P S S H P S S H S P P S H S S S P S H S

44

\oplus PS P S P S S H P S S S H S H S S P S H S S P S S H P S S H

47

SP P S H S S S P S H S \oplus PS P P S S S S S S P P S S P S

D

50

S P S P P P P SPOPOSS

53

E

56

S S S P S-----H S S P S-----

59

S-----P S S H S-----S-----P S S H

62

S S P S-----P P O P O S

F

65

68

G

71

S S P H S H S

74

S S P H S H S S S P H S S P H P P P S H P S S S

77

SSS PSSP SS HP SSS PSSP SSS S SHP S S PSSP SSS SS HS S S

80

S HP SHP S SHP S S S PS S P POS S PS S P P S S S PS P S S

83

S PS S H HP S S HS S PS P POS P S SHP S SHP S HP S S HP

86

S S PS S S PS PS HS S PS S P POS S PS S P P S S

89

S PH S S S P P S S S S P P S S P POS P S S HP S S S S P

92

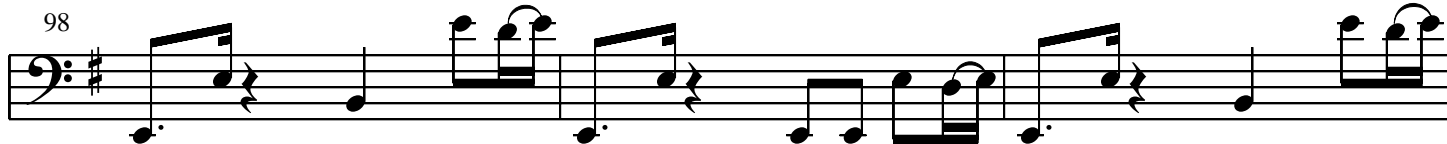
SHP S S P S S S P S S S P POS S S S

95

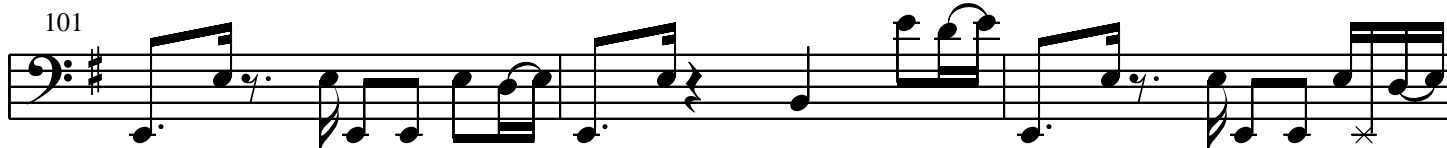
S

H

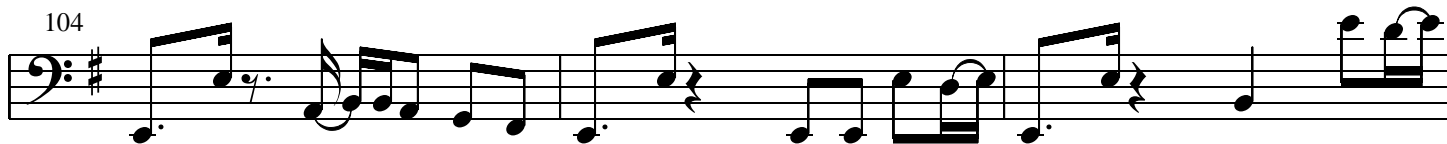
98



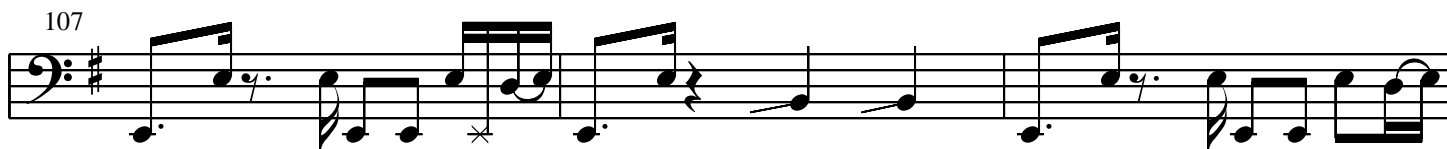
101



104



107



110



I

113



116



119

J

PPOPO S

122

125

128

K

131

134

L

137

140

143

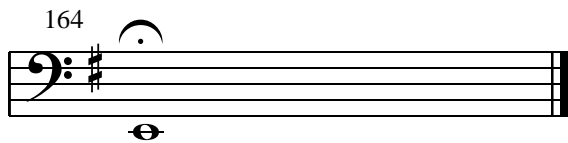
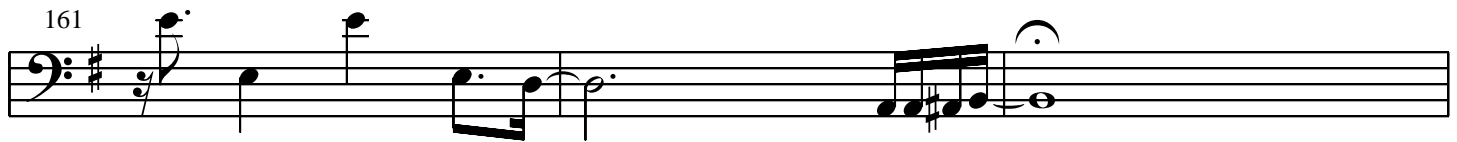
146

149

152

155

158



Bass Notation Legend

S = Slap

P = Pluck

⊕ = Left Hand Tap

H = Hammer-On

PO = Pull-Off